



TAOGLAS®



Datasheet

CAB.011

Description:

Taoglas Cable Assembly
IPEX MHFI to SMA(F) Bulkhead Straight Connector
with 95mm Ø1.13 cable (D-Cut aligns with flat on Hex)

Features:

High Performance Cable Assembly
Rated to 5 watt max. up to 6GHz
VSWR 1.3 max.
95mm of 1.13 Coaxial Cable
RoHS & Reach Compliant

1.	Introduction	3
2.	Cable Insertion Loss	4
3.	RG-174 Cable Specification	5
4.	Mechanical Drawing	7
	Changelog	8

Taoglas makes no warranties based on the accuracy or completeness of the contents of this document and reserves the right to make changes to specifications and product descriptions at any time without notice. Taoglas reserves all rights to this document and the information contained herein. Reproduction, use or disclosure to third parties without express permission is strictly prohibited.

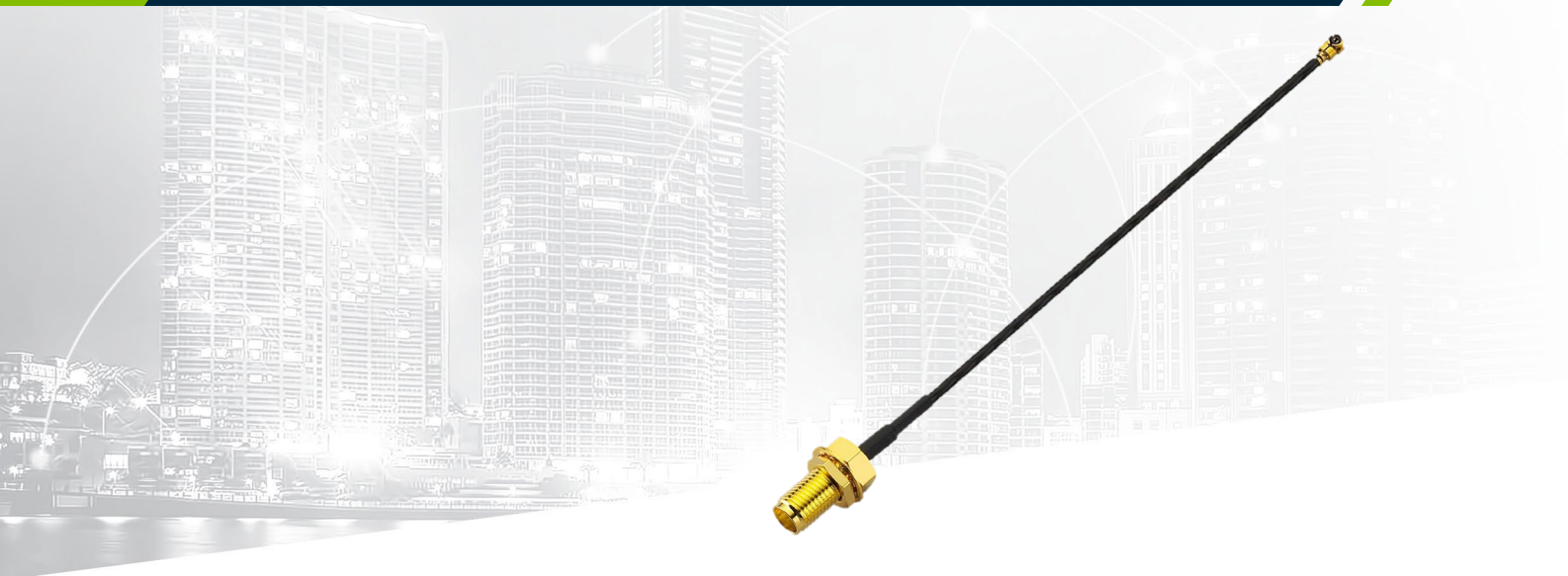
Ireland & USA
ISO 9001:2015
Certified



Taiwan
ISO 9001:2015
Certified



1. Introduction



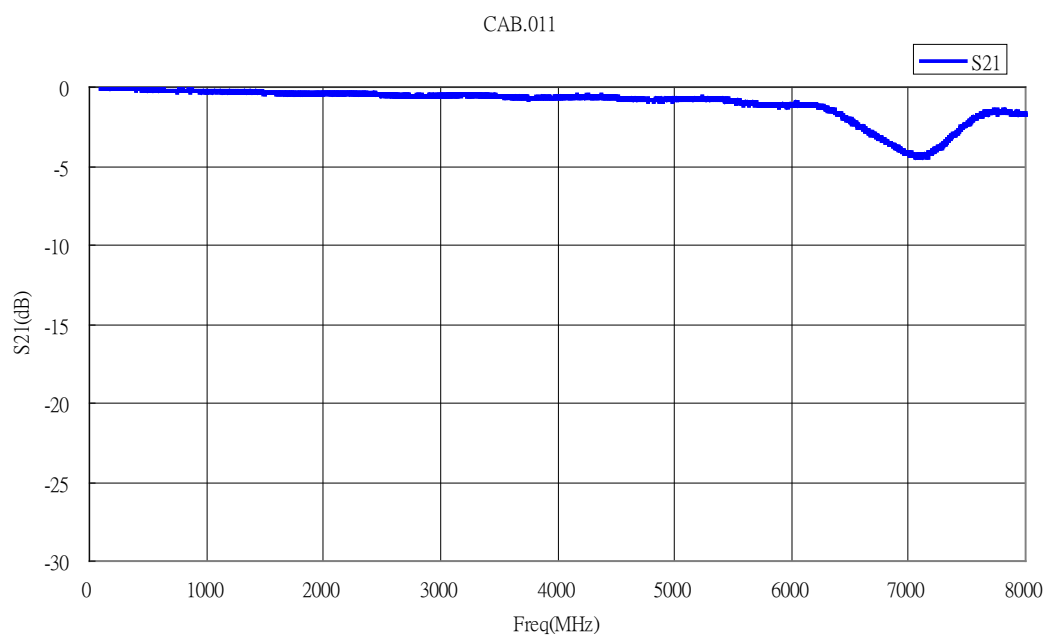
Taoglas Cable & Connector Division manufacture customized or pre-configured cable assemblies in a wide range of lengths, cable types, and connector types. Cables are available with all commercially available RF connector series.

For total flexibility, our industry-first online cable builder allows you to customize and order cable assemblies exactly the way you require them. Using the intuitive interface, build your cable assembly in real time, as you want it, and after you have completed your purchase, your goods will be manufactured according to the lead time specified and then shipped immediately to your address.

Visit <https://www.taoglas.com/cable-builder/> to kick start your next project today.

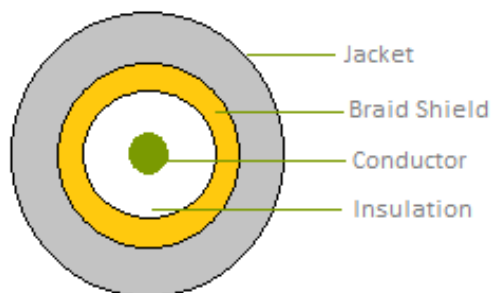
For high quantity pricing, subject to MOQ, or more information, contact your regional Taoglas Customer Support team.

2. Cable Insertion Loss



3. RG-174 Cable Specification

2.1 Drawing – Cross Section



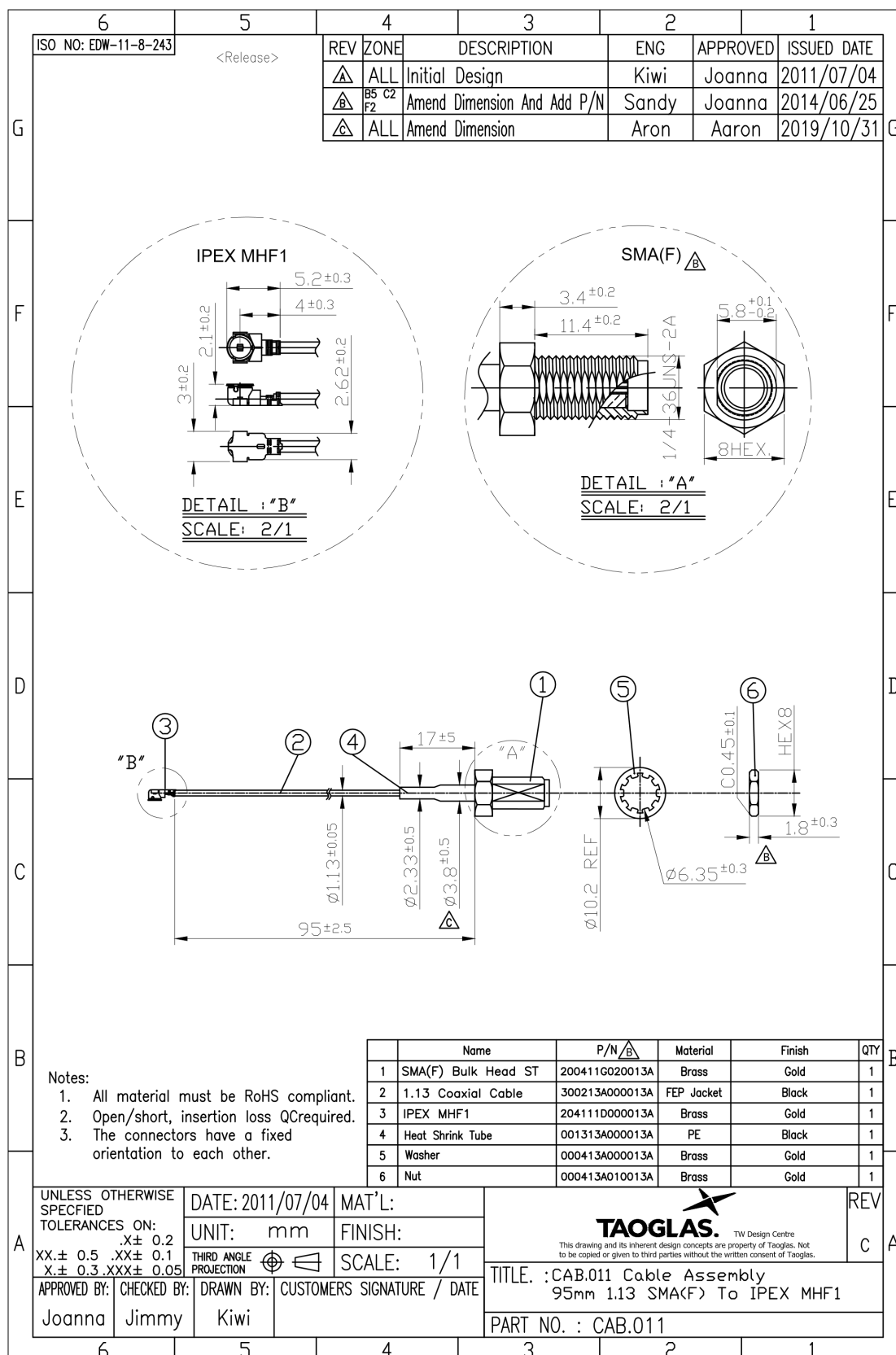
2.2 Structure and Dimensions

Conductor	Insulation	Braid Shield	Jacket
<ul style="list-style-type: none"> Material – Silver Coated Copper 32AWG(7/0.080mm) Diameter - 0.24mm 	<ul style="list-style-type: none"> Material – FEP Avg. Thickness- 0.22mm Diameter – $0.68 \pm 0.02\text{mm}$ Colour - Clear 	<ul style="list-style-type: none"> Material–Tinned-Coated Copper Structure – $16/4/0.050\text{mm} \pm 0.003$ Coverage – 90% Diameter – $0.90 \pm 0.02\text{mm}$ 	<ul style="list-style-type: none"> Material – FEP Avg. Thickness- 0.13mm Diameter – $1.13 \pm 0.05\text{mm}$ Colour – Grey GY-08

2.3 Electrical & Physical Specification

1	Item:	32 AWG
2	Rating Temp Voltage:	105°C 30V UL 1979
3	Insulation Resistance:	1000 MEGA OHM-KM Min.
4	Conductor Resistance:	545 OHM/KM/20°C Max.
5	Dielectric Strength:	AC 1.0 KV/minute
6	Spark test:	2.5 KV
7	Insulation Unaged Tensile Strength	2500 PSI Min.(1.76Kg/mm ²)
	Elongation	200% min.
	Aged Tensile Strength	Unaged Min 75%(168HRS*232°C)
	Elongation	Unaged Min 75%(168HRS*232°C)
8	Jacket Unaged Tensile Strength	2500 PSI Min.(1.76Kg/mm ²)
	Elongation	200% min.
	Aged Tensile Strength	Unaged Min 75%(168HRS*232°C)
	Elongation	Unaged Min 75%(168HRS*232°C)
9	Nom. Impedance	50 ± 3 Ohms
10	Nom. Capacitance	96 ± 3 pF/m
11	Nom. Vel. Of Prop.	69%
12	VSWR (0-6GHz)	Max 1.3
13	Flame Test	VW-1 OK
14	Attenuation (dB/1M)	2.0GHz 2.80

4. Mechanical Drawing



Changelog for the datasheet

SPE-11-8-068–CAB.011

Revision: C (Current Version)

Date:	2025-03-24
Changes:	Updated product description to include 'D-Cut aligns with flat on Hex'.
Changes Made by:	Conor McGrath

Previous Revisions

Revision: B

Date:	2022-06-17
Changes:	Updated the drawing
Changes Made by:	Cesar Sousa

Revision: A (Original First Release)

Date:	2020-05-27
Notes:	
Author:	David Connolly



www.taoglas.com