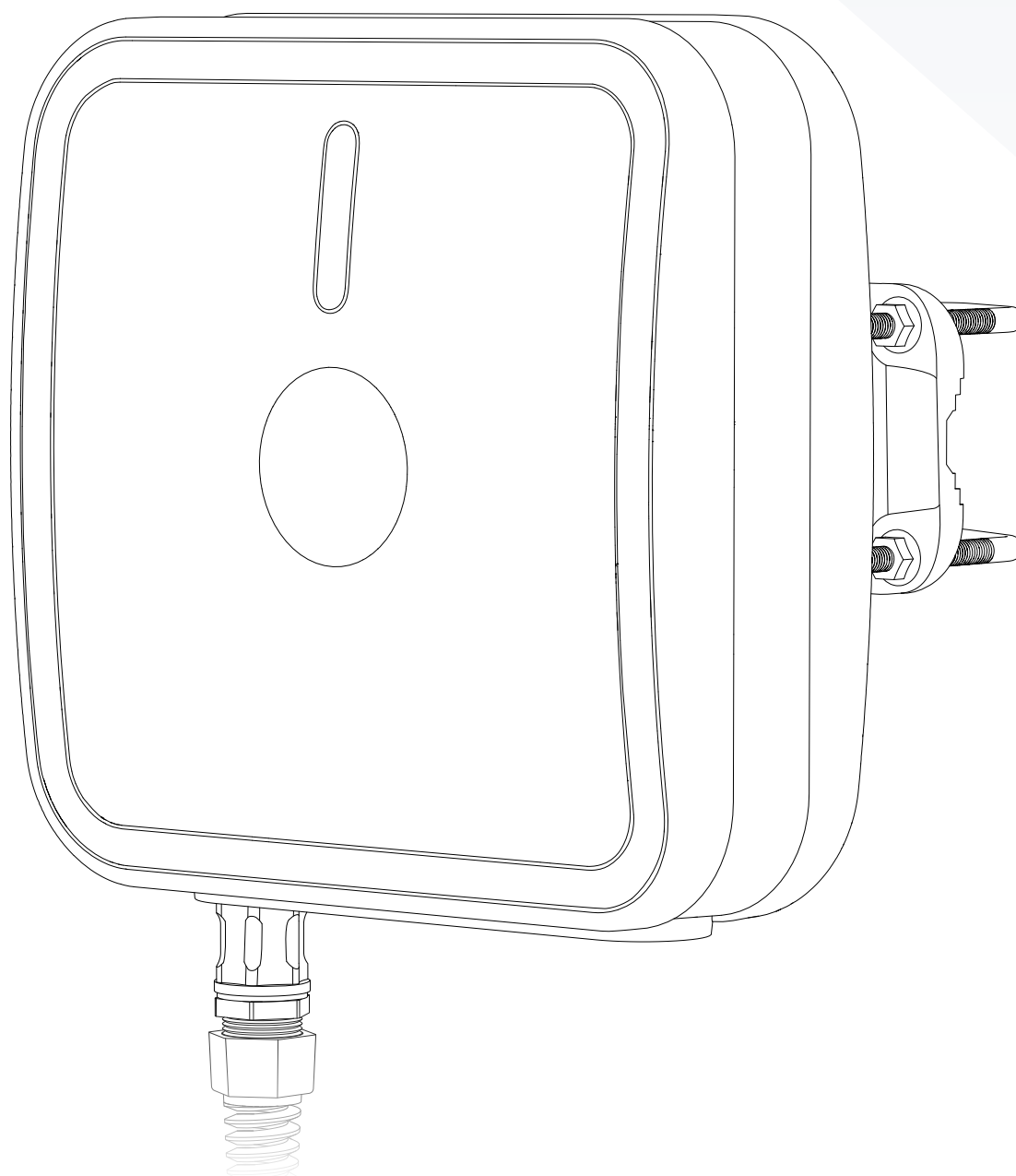


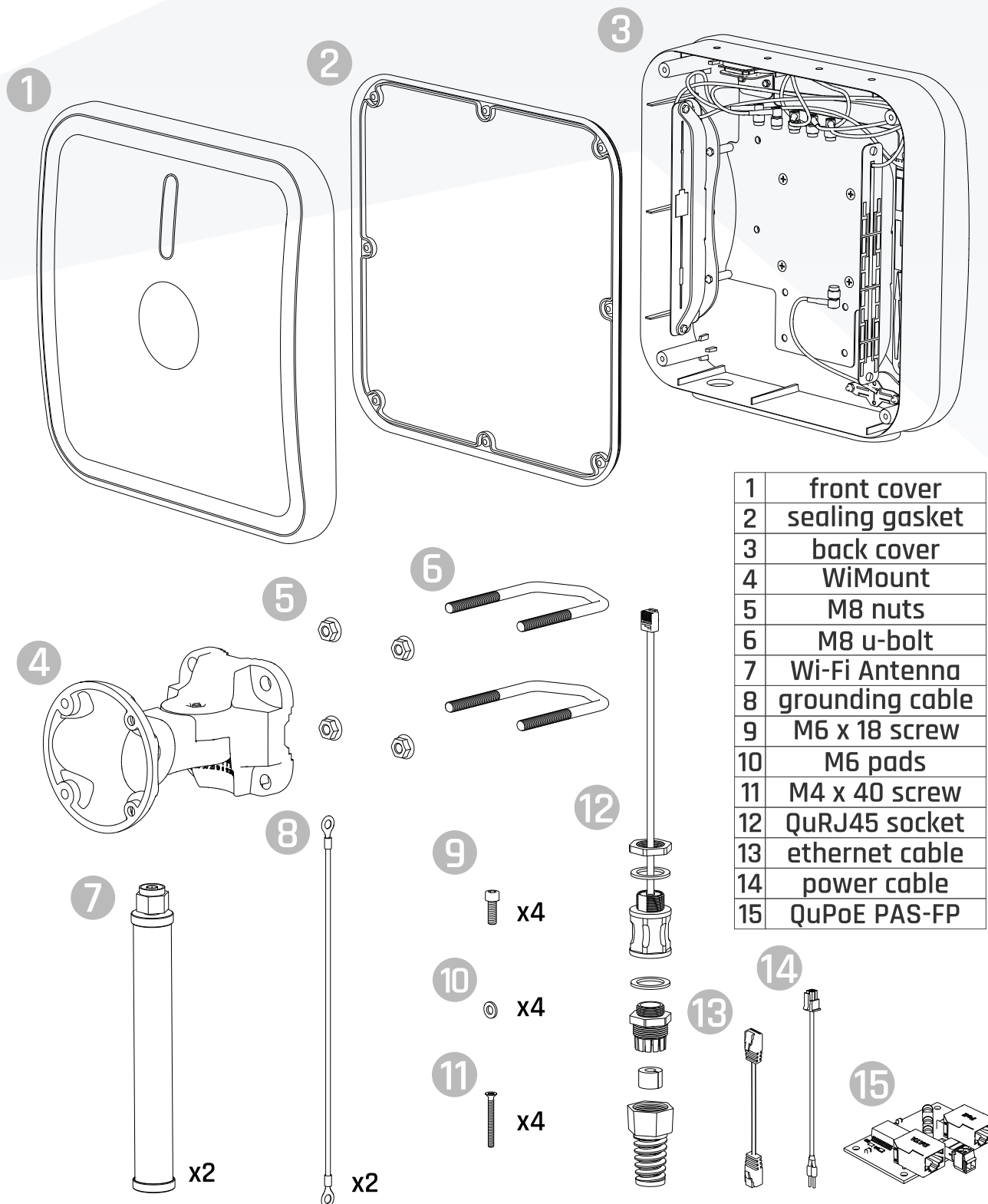


## Quick Installation Guide

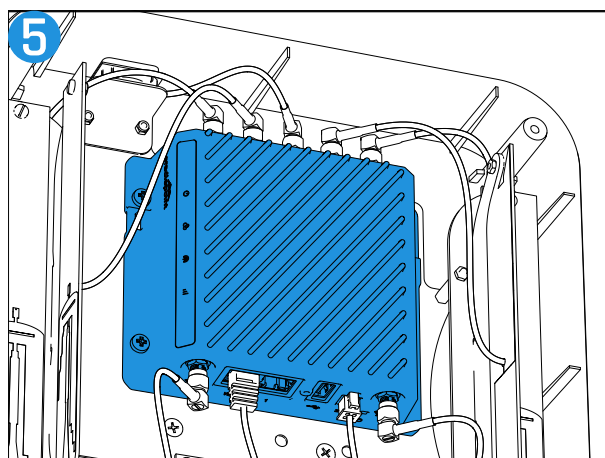
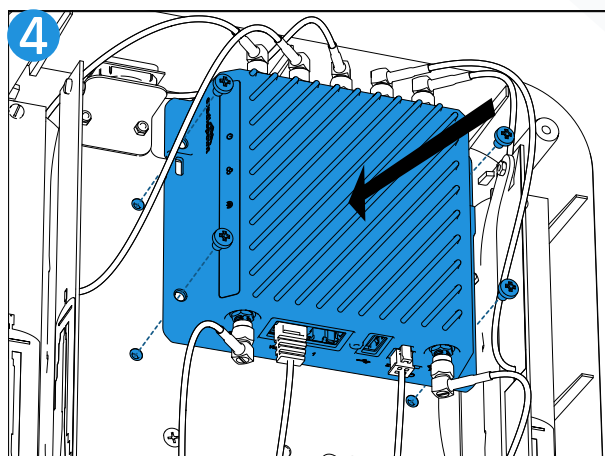
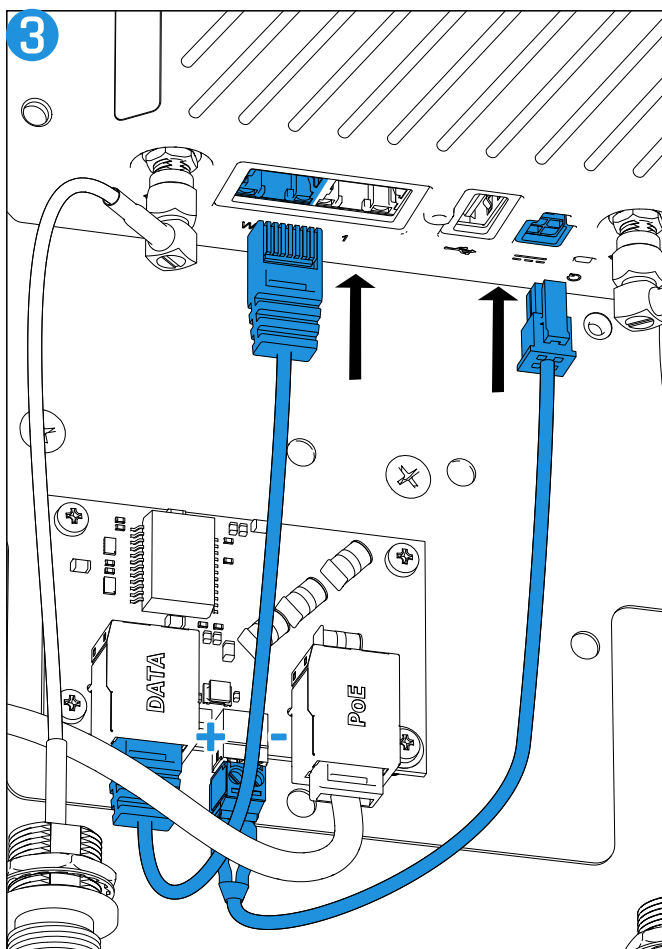
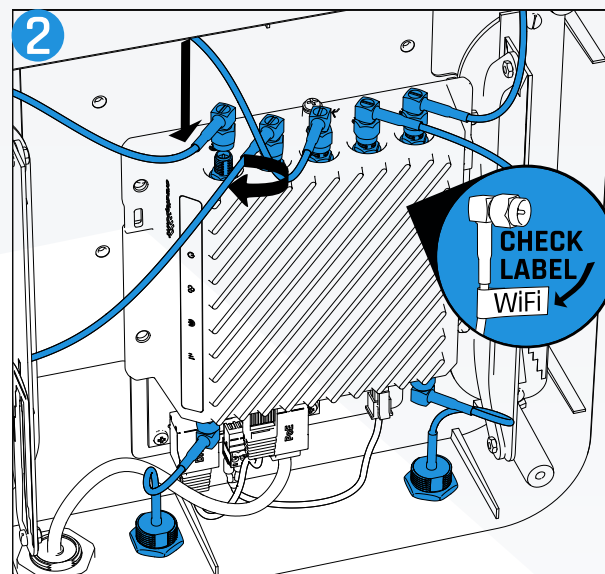
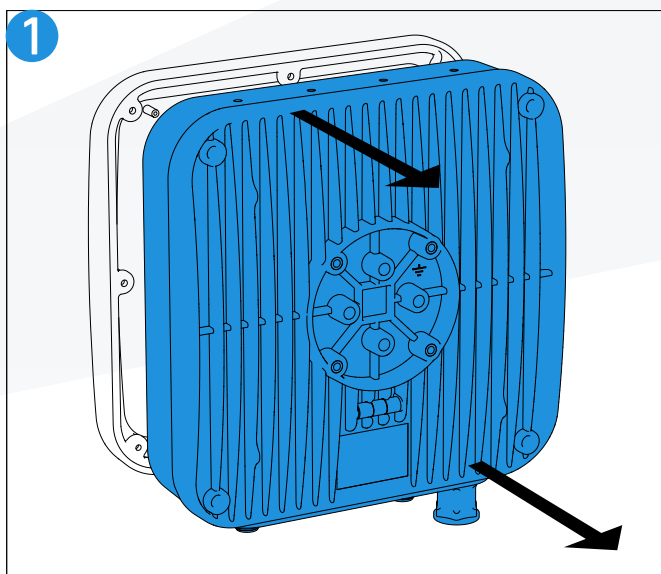
### THOR98PP for Ericsson R980



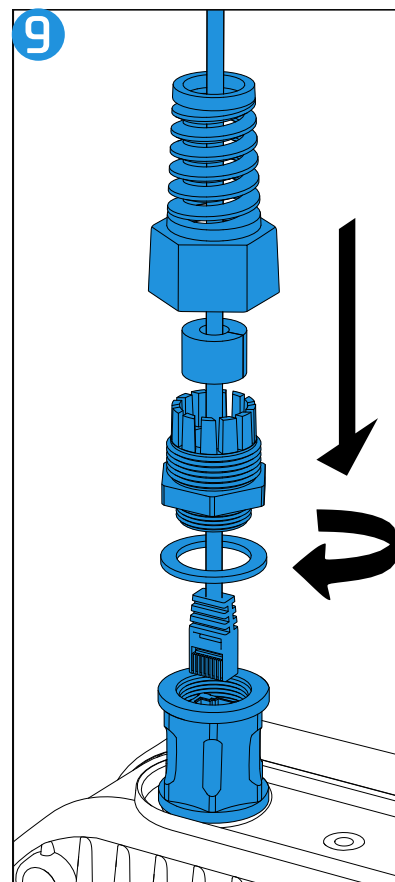
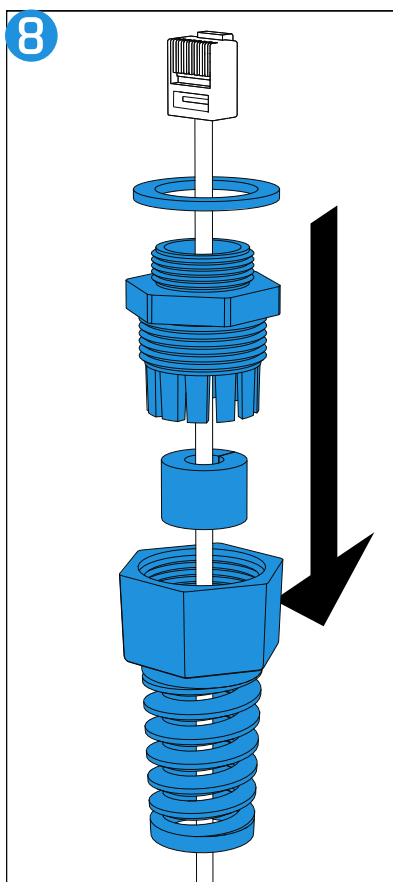
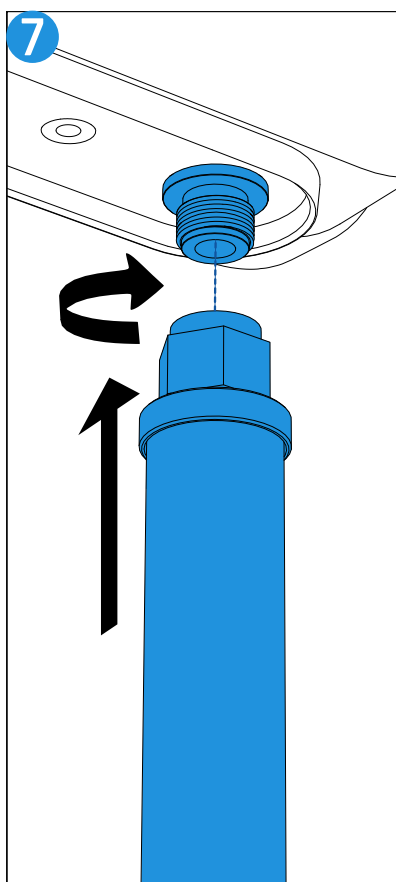
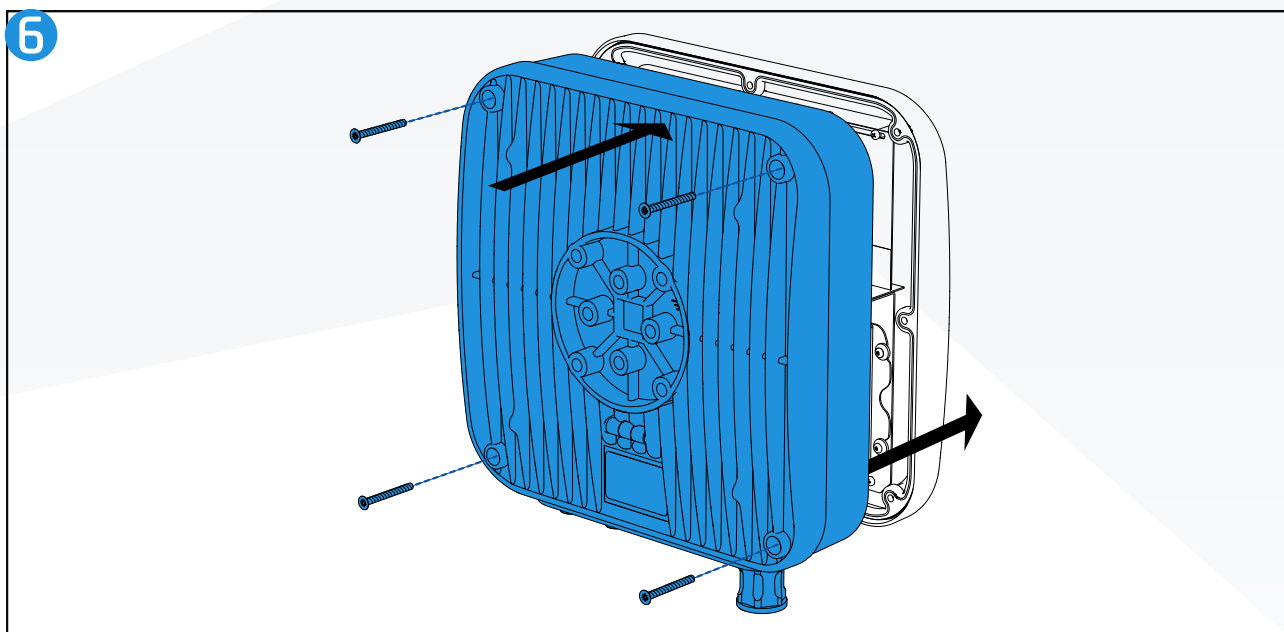
# What's Inside



# Antenna Installation

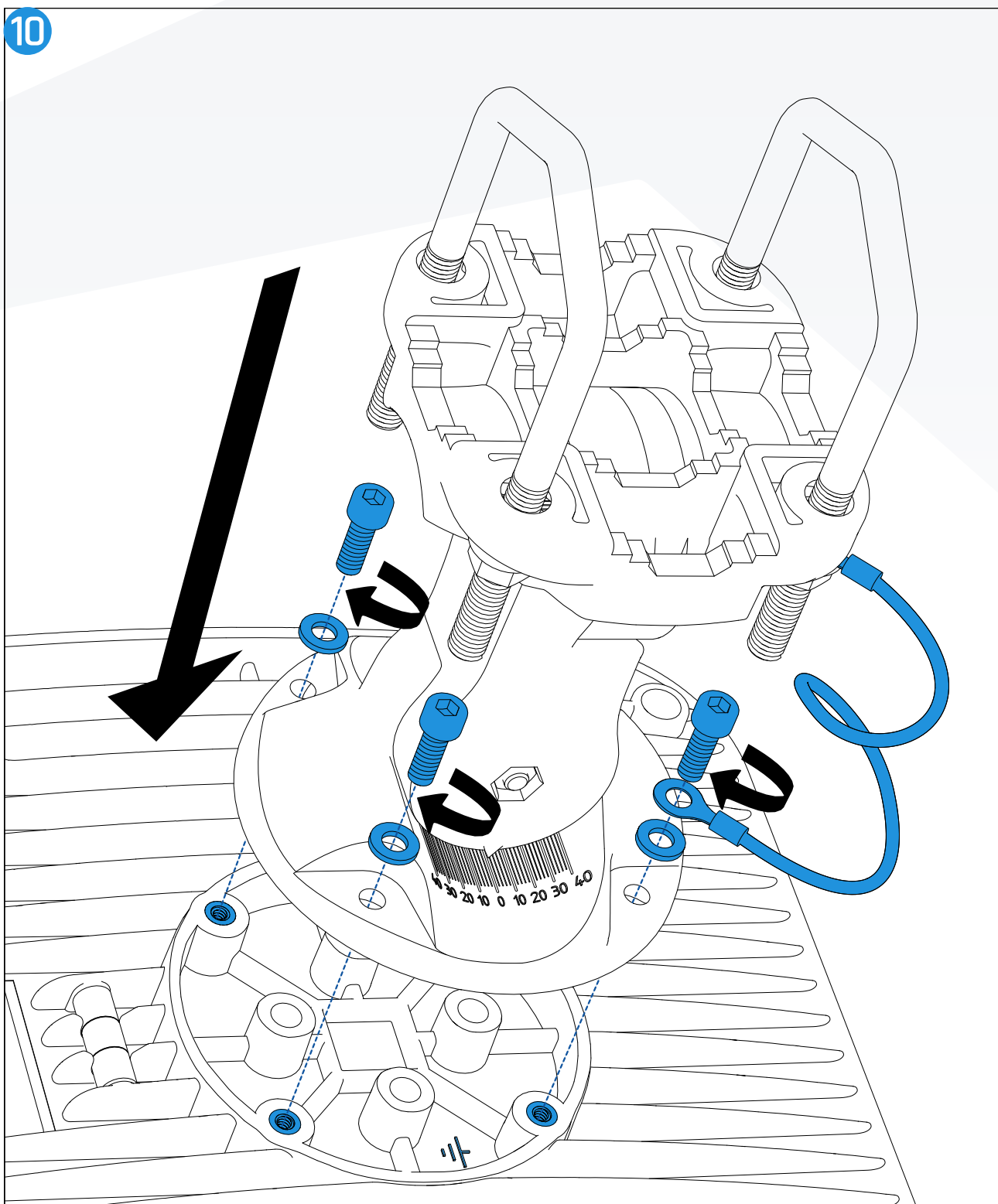


# Antenna Installation



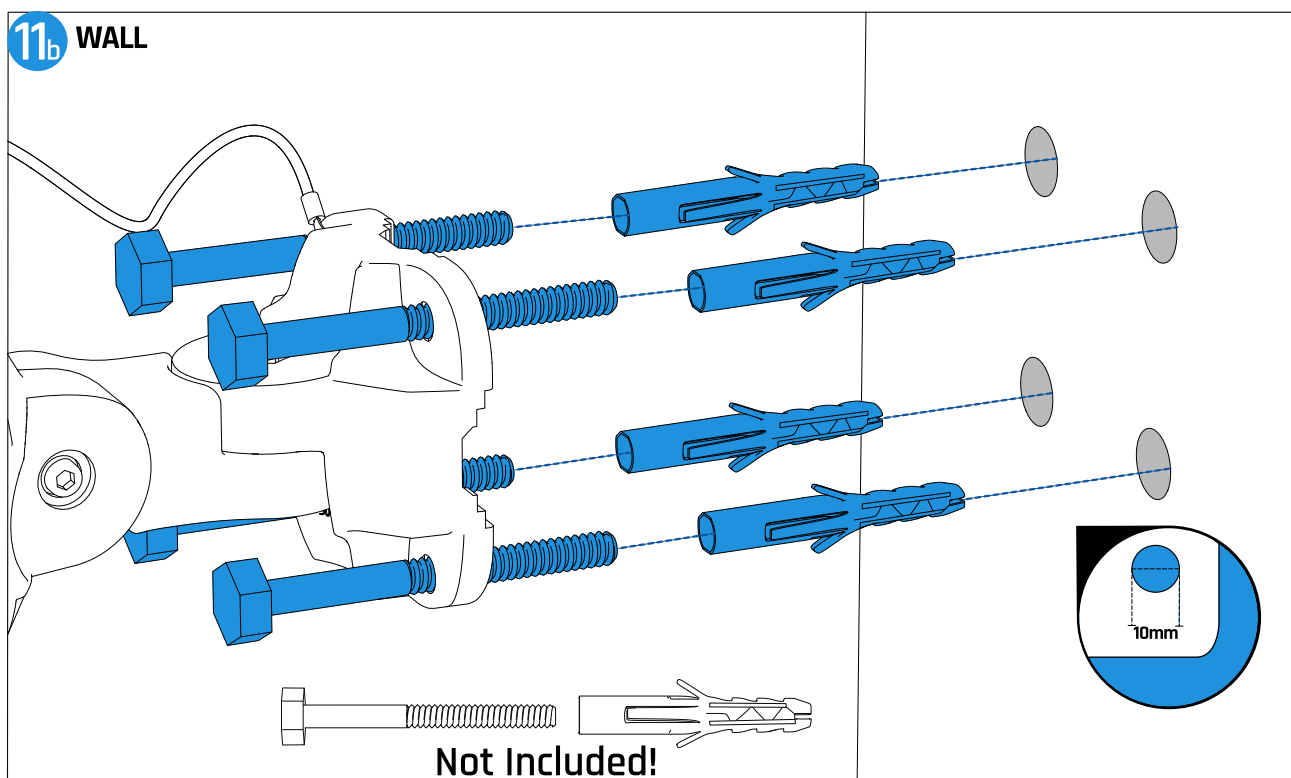
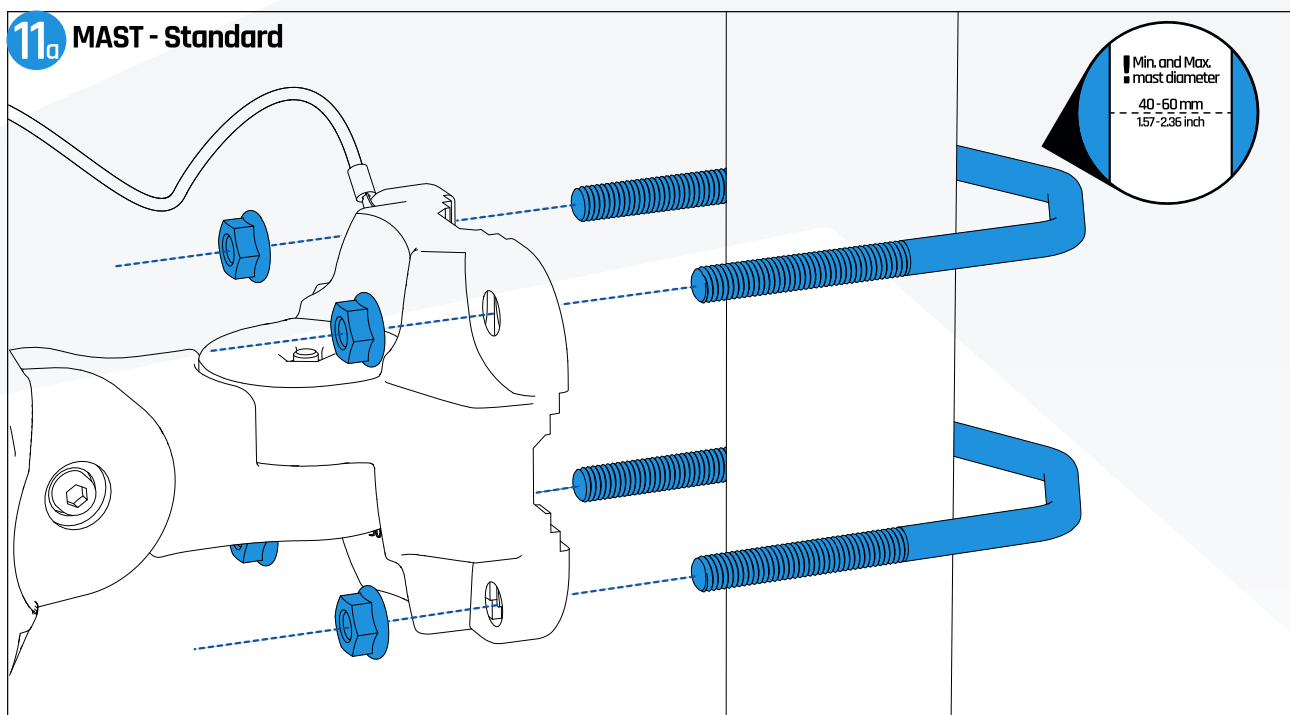


# Mount Installation





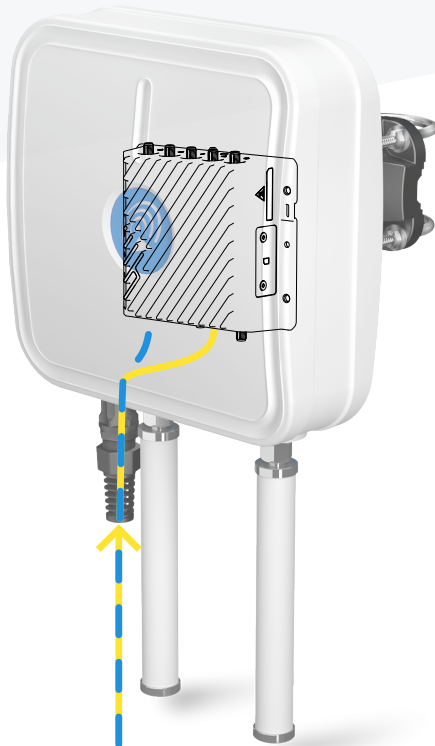
# Wall & Mast Installation



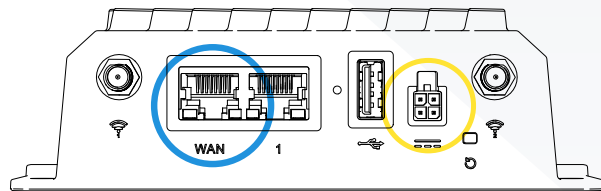


# Power Supply Installation

## 12 POE Power Supply - STANDARD



Please note that Ericsson R980 router does NOT support Passive PoE on the WAN port



Before connecting PoE to your router, please check specification of your model. Connecting PoE to model that's not supporting PoE can damage your router.

For power supply, you can use any Gigabit Passive PoE power supply with a voltage of 9-30V.  
You can use, for example, a power supply from our offer: [QuPSU GP241](#)

Please note that the Passive PoE power supply is not included.

