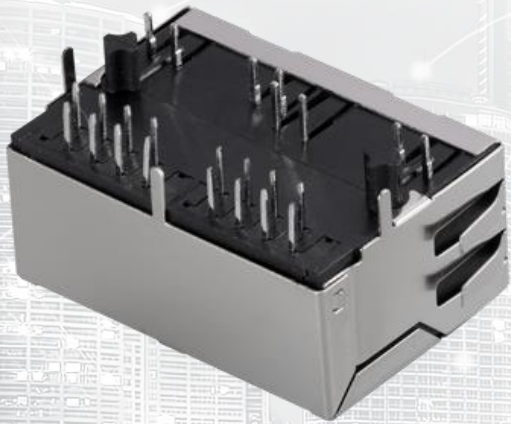




TAOGLAS®



Datasheet

RJ45 ICM 10/100 Base-T Dual Port

Part No:
TMJ26515-8AENL

Description:

RJ45 connector with integrated magnetics 10/100 Base-T
Dual Port Tab-DOWN with right angle THT mount and LEDs

Features:

- 1x2 Configuration
- Transformer + CMC
- Shielded EMI Finger
- Industrial grade
- RoHS Compliant

| | | |
|-------|----------------|---|
| 1. | Introduction | 3 |
| 2. | Specifications | 4 |
| 3. | Mechanical | 5 |
| 4. | Electrical | 6 |
| 5. | Packaging | 7 |
| <hr/> | | |
| | Changelog | 8 |

Taoglas makes no warranties based on the accuracy or completeness of the contents of this document and reserves the right to make changes to specifications and product descriptions at any time without notice. Taoglas reserves all rights to this document and the information contained herein. Reproduction, use or disclosure to third parties without express permission is strictly prohibited.



1. Introduction



The Taoglas TMJ26515-8AENL is a 10/100 Base-T Dual-port, tab-DOWN RJ45 Integrated Connector with a shielded EMI Finger and short body design. It features a widely recognized footprint and a compatible package that aligns with industry standards for RJ45 Integrated Connectors, making it popular among users.

Typical Applications Include:

- Industrial Automation
- Hubs
- Routers
- Switches
- Wireless Access Points

Taoglas Magnetics offer an extensive product line of RJ45 Integrated Connectors designed for commercial and industrial grade applications, supporting 10/100 Base-T (Atmos100 Series) and 1G Base-T (Atmos1000 series). These surface mount or through-hole components provide reliable performance and maintain signal integrity that meets IEEE 802.3 standards, and they are UL certified. The Power over Ethernet options are also available including PoE, PoE+ and PoE++.

The majority of Taoglas RJ45 ICMs are manufactured with fully automated winding, assembly & testing to ensure consistent performance, quality and reliability while ensuring cost competitiveness for its customers. These products are fully compliant with the REACH and RoHS directive, and compatible with all major PHY vendors.

For customized products or support with integration, contact your regional Taoglas customer support team for further information.

2. Specifications

| Electrical Performance @25°C | |
|---------------------------------|------------------------------------|
| OCL | 350uH Min @100KHz,0.1V,8mA DC BIAS |
| Turns Ratio (±3%) | 1CT:1CT |
| DCR | 1.2Ω MAX |
| Insertion Loss | -1.0dB MAX @1-100MHz |
| Return Loss | 18dB MIN @1-30MHz |
| | -15dB MIN @30-60MHz |
| | -12dB MIN @60-100MHz |
| Crosstalk | -40dB MIN @30MHz |
| | -35dB MIN @60MHz |
| | -30dB MIN @100MHz |
| Common Mode Rejection | -30dB MIN @1-100MHz |
| Isolation PHY SIDE To Line SIDE | 1500Vrms |

| Environmental Specifications | |
|------------------------------|----------------|
| Operating Temperature | -40°C TO +85°C |

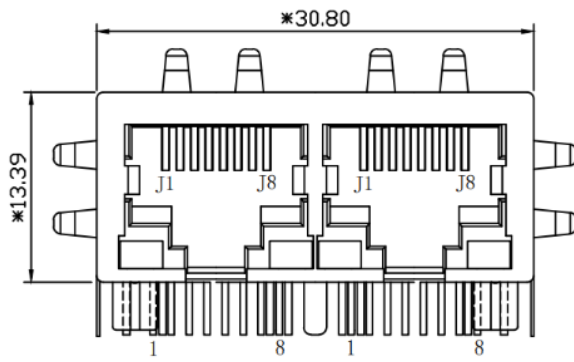
| Material Specifications | |
|-----------------------------|--|
| Housing | Thermoplastic PBT+30%G.F UL94V-0 |
| Contact | Phosphor Bronze C5210R-EH Thickness=0.35mm |
| Pins | Brass C2680R-H Thickness=0.35mm |
| Shield | SUS 201-1/2H Thickness=0.2mm |
| Contact plating | Gold 30 micro-inches min. in contact area |
| Wave solder tip temperature | 250°C Max, 5 Sec |

| Compliance | |
|----------------------------------|--|
| UL recognized - FILE NO. E528697 | |
| IEEE 802.3 | |
| RoHS Compliant | |

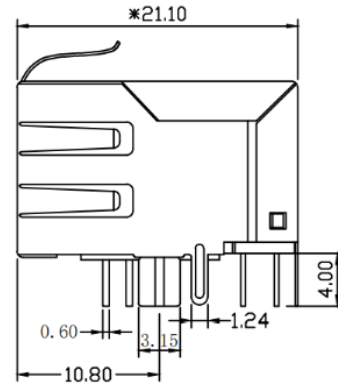
| Storage requirements | |
|----------------------|----------------|
| Humidity | MSL - 1 |
| Storage Temperature | -40°C TO +85°C |

3. Mechanical

3.1 Mechanical Drawings

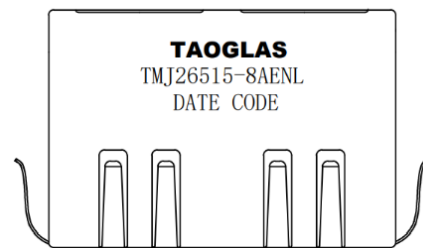


Front View



Side View

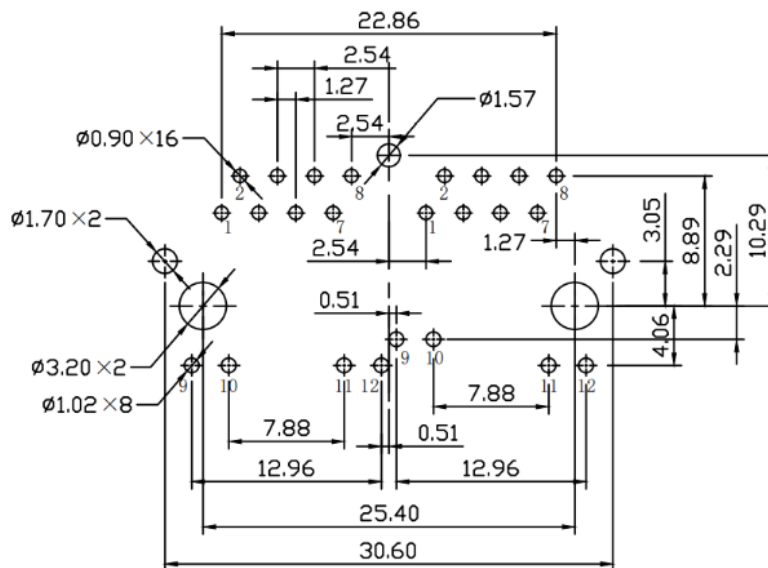
| Mechanical Specifications | |
|---------------------------|--------------------|
| Height | 13.39 mm |
| Width | 30.80 mm |
| Depth | 21.10 mm |
| Weight | 10 g |
| Mounting Style | Through Hole (THT) |
| Mounting Angle | Right Angle |



Top View

Dimensions are in millimeters with the following tolerances: X.XX = ±0.25

3.2 PCB Layout

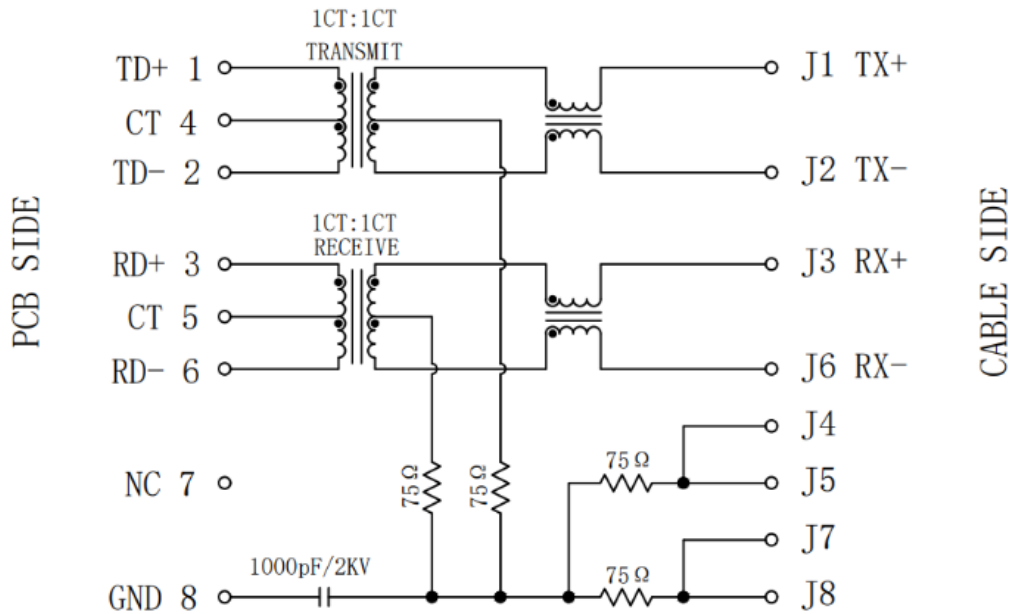


Suggested PCB Layout (Top View)

Dimensions are in millimeters with the following tolerances: X.XX = ±0.10

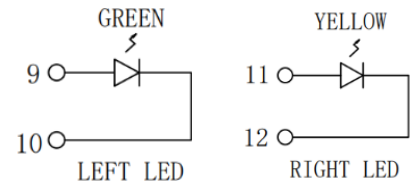
4. Electrical

4.1 Electrical Drawings

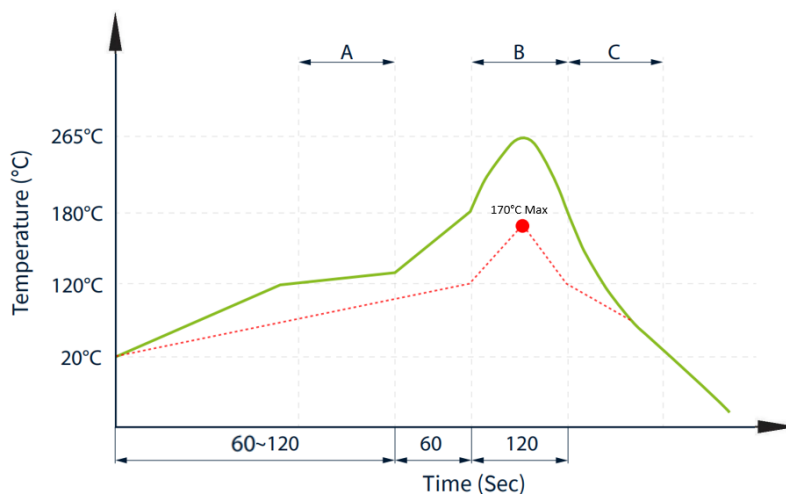


LED Electrical Specification

| Standard LED | Wavelength (nm) | V_F ($I_F=20\text{mA}$) | I_R ($V_R=5\text{v}$) |
|--------------|-----------------|-----------------------------|---------------------------|
| Green | 565 | 1.8~2.6v | 10 μA Max |
| Yellow | 585 | 1.8~2.6v | 10 μA Max |



4.2 Profile of Wave Solder



— Pin Temperature
- - - Component Temperature
 A. Preheating
 B. Soldering
 C. Gradual Cooling

Suggested Wave Solder Curve

1. Tip temperature time: $3 \pm 1\text{sec}$
2. Tip temperature time: $3 \pm 1\text{sec}$

The melting point of Sn99.3/Cu0.7

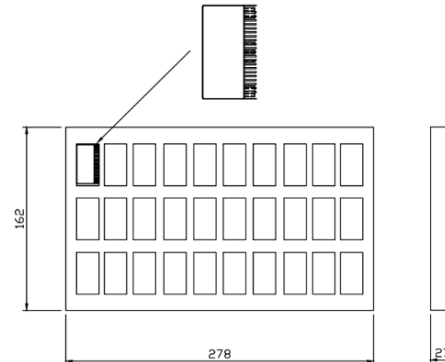
5. Packaging

5.1 SPQ

30 pcs/tray

Tray dimension: 278*162*27 mm

Tray Weight: 0.38 kg



5.2 Carton

1 Carton = 20 trays = 600 pcs

Carton dimensions: 300*370*300 mm

Carton Weight: 8.3 kg



5.3 Label

| | |
|------------------|----------|
| Taoglas Limited | |
| P/N NO: XXXXXXXX | |
| QYT: XXX PCS | DC: XXXX |
| DATE: XXXX-XX-XX | |

SPQ Label (8x4cm)

| | |
|------------------|---------------|
| Taoglas Limited | |
| P/N NO: XXXXXXXX | |
| PO: XXXXXXXX | B/N: XXXXXXXX |
| QYT: XXX PCS | DC: XXXX |
| DATE: XXXX-XX-XX | |

Carton Label (8x4cm)

Changelog

Changelog for the datasheet

SPE-23-8-357 – TMJ0122-7KONL

Revision: A (Original First Release)

| | |
|---------|---------------|
| Date: | 2024-01-01 |
| Notes: | |
| Author: | Javier Vasena |

Previous Revisions

| | |
|--|--|
| | |
| | |



www.taoglas.com

