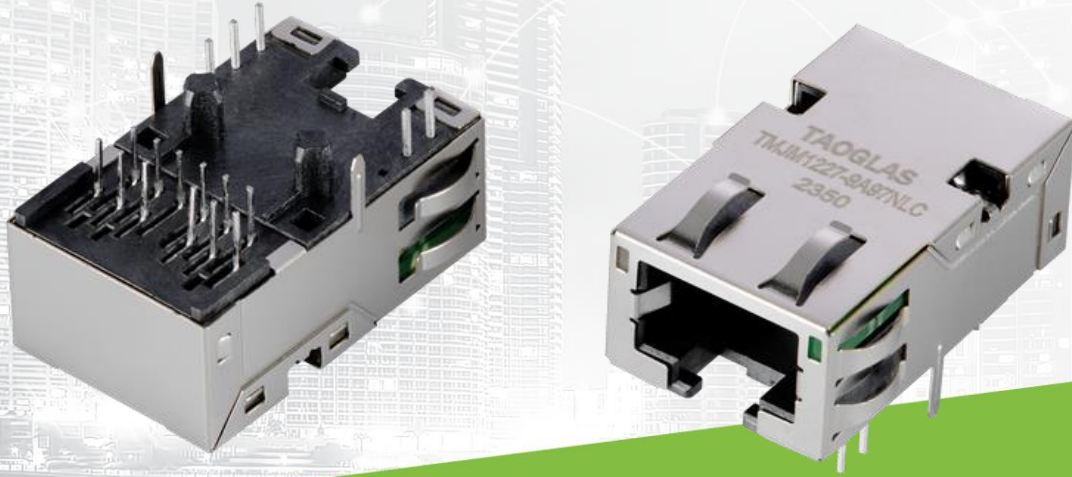




# TAOGLAS®



# Datasheet

## RJ45 ICM 10G Base-T Low Profile

**Part No:**  
TMJM1227-9A97NLC

**Description:**  
RJ45 connector with integrated magnetics 10G Base-T  
Single Port Tab-DOWN with right angle THT mount and LEDs

**Features:**  
3 Wire + Transformer  
Low Profile  
Shielded EMI Finger  
Industrial grade  
50μ" Gold  
RoHS Compliant

1.	Introduction	3
2.	Specifications	4
3.	Mechanical	5
4.	Electrical	6
5.	Packaging	7
<hr/>		
	Changelog	8

Taoglas makes no warranties based on the accuracy or completeness of the contents of this document and reserves the right to make changes to specifications and product descriptions at any time without notice. Taoglas reserves all rights to this document and the information contained herein. Reproduction, use or disclosure to third parties without express permission is strictly prohibited.



# 1. Introduction



The Taoglas TMJM1227-9A97NLC is a 10G Base-T single-port, tab-DOWN RJ45 Integrated Connector with a shielded EMI finger body design and low profile. It features a widely recognized footprint and a compatible package that aligns with industry standards for RJ45 Integrated Connectors, making it popular among users.

Typical Applications Include:

- Industrial Automation
- Hubs
- Routers
- Switches
- Wireless Access Points

Taoglas Magnetics offer an extensive product line of RJ45 Integrated Connectors designed for commercial and industrial grade applications, supporting 10/100 Base-T (Atmos100 Series) and 1G Base-T (Atmos1000 series). These surface mount or through-hole components provide reliable performance and maintain signal integrity that meets IEEE 802.3 standards, and they are UL certified. The Power over Ethernet options are also available including PoE, PoE+ and PoE++.

The majority of Taoglas RJ45 ICMs are manufactured with fully automated winding, assembly & testing to ensure consistent performance, quality and reliability while ensuring cost competitiveness for its customers. These products are fully compliant with the REACH and RoHS directive, and compatible with all major PHY vendors.

For customized products or support with integration, contact your regional Taoglas customer support team for further information.

## 2. Specifications

Electrical Performance @25°C	
OCL	120uH Min @100KHz, 0.1V
Turns Ratio (±5%)	1CT:1CT
Insertion Loss (dB Max)	1-100MHz: -1.0
	100-400MHz: -2.0
	400-500MHz: -3
Return Loss (dB Min)	1-100MHz: -22
	100-200MHz: -16
	200-300MHz: -12
	300-400MHz: -10
	400-500MHz: -8
Cross Talk (dB Min)	1-100MHz: -30
	100-500MHz: -20
Common Mode Rejection (dB Min)	1-100MHz: -30
	100-500MHz: -20
Common Mode to Differential Mode Rejection (dB Min)	1-250MHz: -30
	250-500MHz: -22
Isolation PHY SIDE To Line SIDE	1500Vrms

Environmental Specifications	
Operating Temperature	-40°C TO +85°C

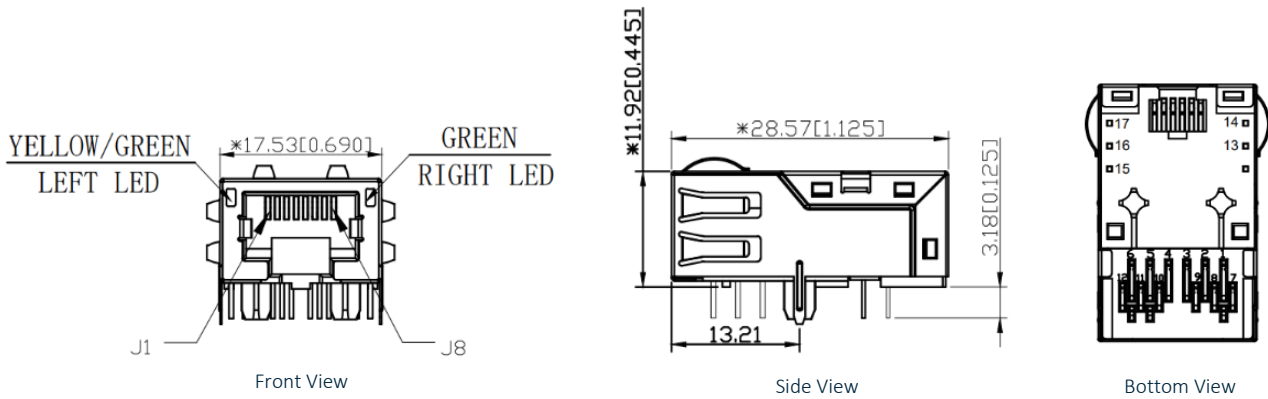
Material Specifications	
Housing	LCP BLACK UL94 V-0
Contact	Phosphor Bronze
Shield Plating	Nickel
Shield	Phosphor Bronze
Contact plating	Gold 50 micro-inches min. in contact area
Wave solder tip temperature	260°C Max, 10 Sec

Compliance	
UL recognized - FILE NO. E528697	
IEEE 802.3	
RoHS Compliant	

Storage requirements	
Humidity	MSL - 1
Storage Temperature	-40°C TO +85°C

### 3. Mechanical

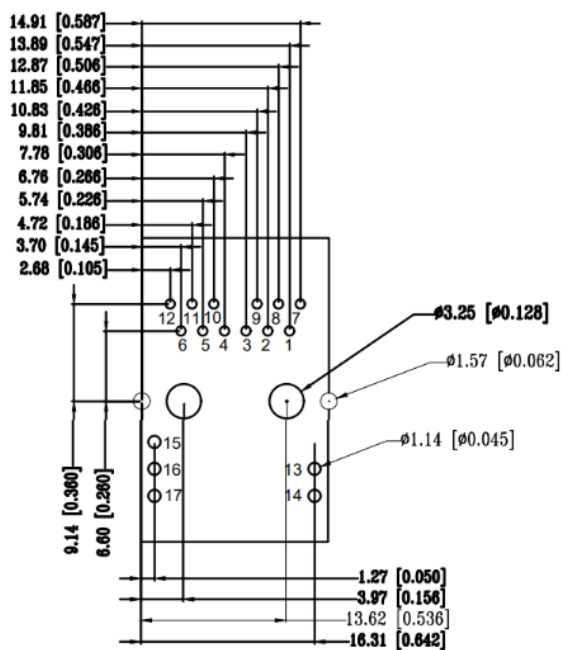
#### 3.1 Mechanical Drawings



Mechanical Specifications	
Height	11.92 mm
Width	17.53 mm
Depth	28.57 mm
Weight	7.4 g
Mounting Style	Through Hole (THT)
Mounting Angle	Right Angle

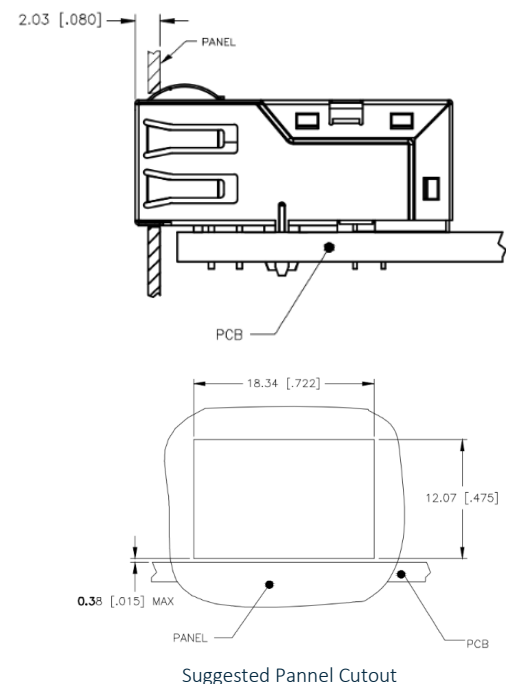
Dimensions are in millimeters with the following tolerances: X.XX =  $\pm 0.25$

#### 3.2 PCB Layout & Suggested Panel Opening



Suggested PCB Layout (Top View)

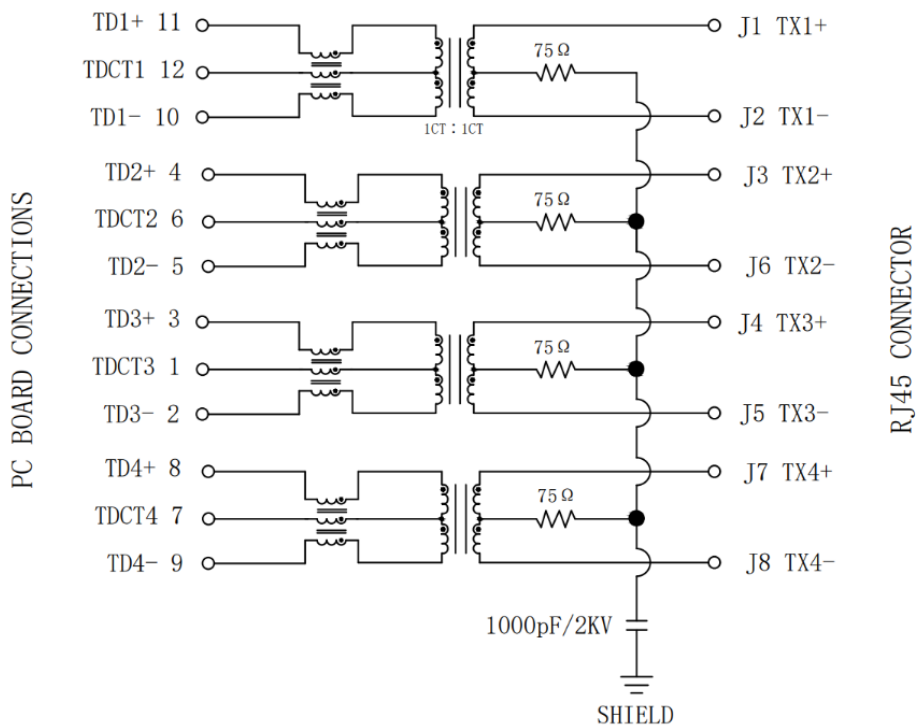
Dimensions are in millimeters with the following tolerances: X.XX =  $\pm 0.10$



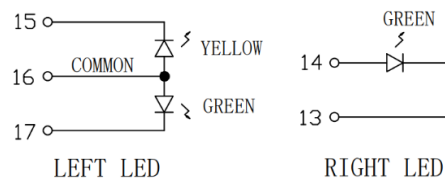
Suggested Panel Cutout

# 4. Electrical

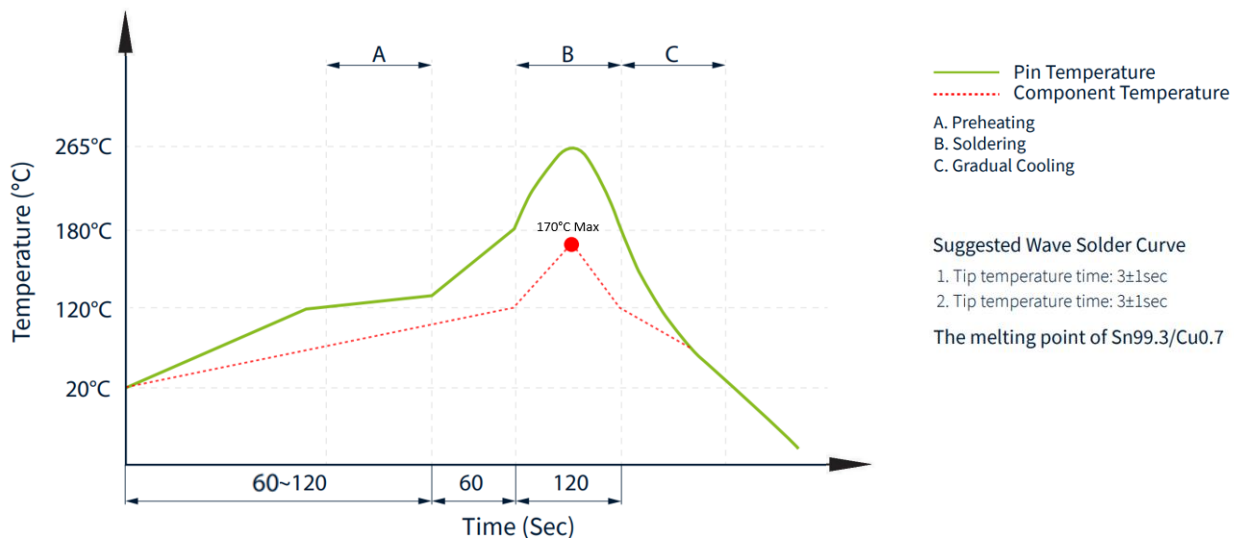
## 4.1 Electrical Drawings



LED Electrical Specification			
Standard LED	Wavelength (nm)	$V_F$ ( $I_F=20mA$ )	$I_R$ ( $V_R=5v$ )
Green	565	1.8~2.6v	10 $\mu A$ Max
Yellow	585	1.8~2.6v	10 $\mu A$ Max



## 4.2 Profile of Wave Solder



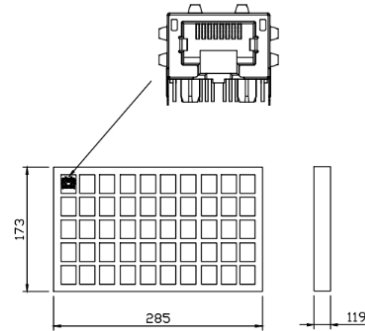
## 5. Packaging

### 5.1 SPQ

50 pcs/tray

Tray dimension: 285\*173\*11.9 mm

Tray Weight: 0.445 kg

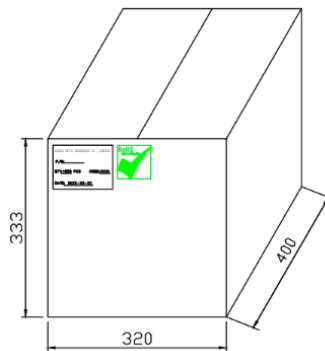


### 5.2 Carton

1 Carton = 26 trays = 1300 pcs

Carton dimensions: 320\*400\*335 mm

Carton Weight: 12.65 kg



### 5.3 Label

Taoglas Limited	
P/N NO: XXXXXXXX	
QYT: XXX PCS	DC: XXXX
DATE: XXXX-XX-XX	

SPQ Label (8x4cm)

Taoglas Limited	
P/N NO: XXXXXXXX	
PO: XXXXXXXX	B/N: XXXXXXXX
QYT: XXX PCS	DC: XXXX
DATE: XXXX-XX-XX	

Carton Label (8x4cm)

# Changelog

Changelog for the datasheet

**SPE-23-8-369 – TMJM1227-9A97NLC**

**Revision: A (Original First Release)**

Date:	2024-01-01
Notes:	
Author:	Javier Vasena

**Previous Revisions**






[www.taoglas.com](http://www.taoglas.com)

