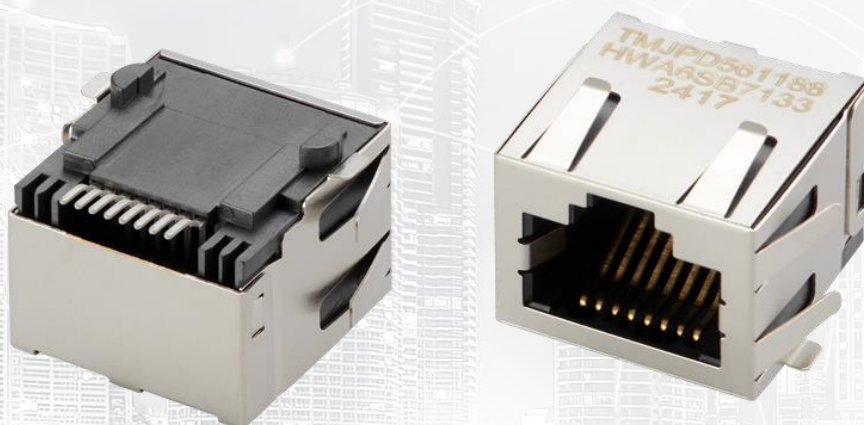




# TAOGLAS®



## Datasheet

### RJ45 Modular Jack 8P8C Cat5E SMT

**Part No:**  
TMJPD561188HWA6SB7133

**Description:**  
1G Base-T Single Port RJ45 without magnetics.  
Tab-UP with right angle SMT mount

**Features:**  
Shielded EMI Finger  
Industrial grade

1. Specifications	3
2. Mechanical	4
3. Electrical	5
4. Packaging	6
<hr/>	
Changelog	7

Taoglas makes no warranties based on the accuracy or completeness of the contents of this document and reserves the right to make changes to specifications and product descriptions at any time without notice. Taoglas reserves all rights to this document and the information contained herein. Reproduction, use or disclosure to third parties without express permission is strictly prohibited.



# 1. Specifications

Electrical Specifications	
Voltage	125 VAC RMS
Current Rating	1.5 AMP
Dielectric Strength	1000 VAC Rms 50hz or 60hz,1min.
Insulation Resistance	500 Mega Ohms Min. Initial After 500v Dc For 1 Minute
Contact Resistance	Single Terminal 30 Milli Ohms Max. Initial 50 Milli Ohms Max. After Durability Test

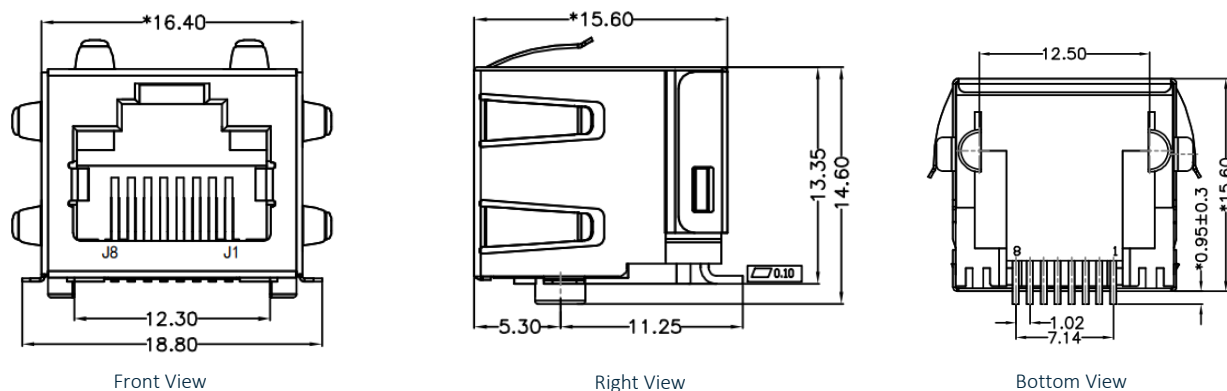
Mechanical Specifications	
Durability	750 Cycles Min,12.5mm/Minute
Insertion Force	2.2kg.F Max.
Retention Strength	7.7kg.F Between Jack and Plug

Material Specifications	
Housing	LCP, UL94V-0, Black
Terminal	Phosphor Bronze Ø=0.35mm, 50 µ" Gold Plating on Contact Area
Shield	C2680, T=0.20mm, 20µ" Min Nickel Plating on All Area.

Environmental Specifications	
Operating Temperature	-40°C TO +85°C
Storage Temperature	-40°C TO +85°C

## 2. Mechanical

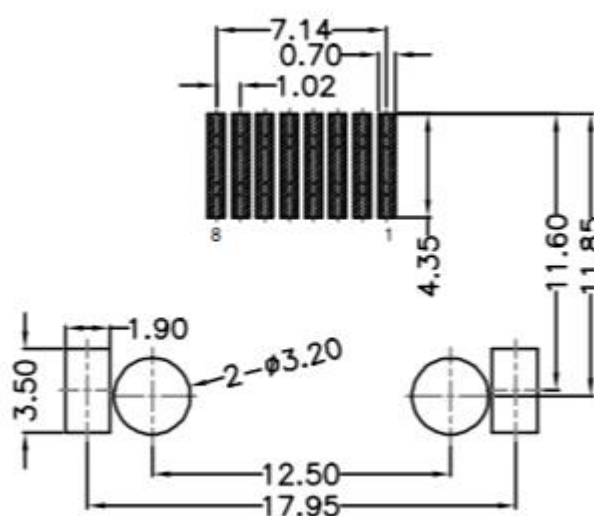
### 2.1 Mechanical Drawings



Mechanical Specifications	
Height	13.35 mm
Width	16.40 mm
Depth	15.60 mm
Weight	3.95 g
Mounting Style	Surface mount (SMT)
Mounting Angle	Right Angle

Dimensions are in millimeters with the following tolerances: X.XX = ±0.25

### 2.2 PCB Layout

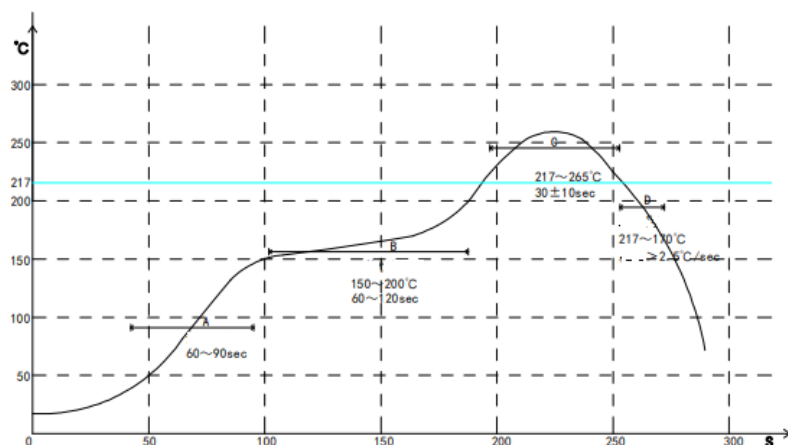


Suggested PCB Layout (Top View)

Dimensions are in millimeters with the following tolerances: X.XX = ±0.10

## 3. Electrical

### 3.1 Profile of Reflow Solder



- A. Temperature range of open
  - B. Preheat temperature zone
  - C. The welding zone
  - D. The cooling zone
- Tip temperature:  $265 \pm 5^{\circ}\text{C}$ .  
 Tip temperature time:  $30 \pm 10\text{Sec}$ .  
 Tip melting point of Sn96.5/Ag3/Cu0.5.

## 4. Packaging

### 4.1 SPQ

100 pcs/tray

Tray dimension: 185\*260\*170 mm

Tray Weight: 0.5 kg

### 4.2 Carton

1 Carton = 24 trays = 2400 pcs

Carton dimensions: 520\*200\*275 mm

Carton Weight: 12.7 kg



### 4.3 Label

Taoglas Limited	
P/N NO: XXXXXXXX	
QYT: XXX PCS	DC: XXXX
DATE: XXXX-XX-XX	

SPQ Label (8x4cm)

Taoglas Limited	
P/N NO: XXXXXXXX	
PO: XXXXXXXX	B/N: XXXXXXXX
QYT: XXX PCS	DC: XXXX
DATE: XXXX-XX-XX	

Carton Label (8x4cm)

# Changelog

Changelog for the datasheet

SPE-24-8-120 – TMJPD561188HWA6SB7133

Revision: B	
Date:	2025-02-25
Notes:	Reflow update
Author:	Javier Vasena

Previous Revisions

Revision: A (Original First Release)	
Date:	2024-06-30
Notes:	
Author:	Javier Vasena




[www.taoglas.com](http://www.taoglas.com)

