

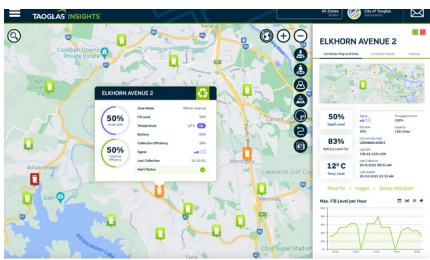
DATASHEET

Taoglas Waste Insights™ for Smart Waste Management



The **Taoglas Waste Insights™** solution enables real-time insights and intelligence to help your enterprise optimize your waste assets with real-time data and analytics anywhere, anytime.

- The world's most advanced waste sensor for public space waste bins
- A comprehensive, waste asset and team management platform
- A robust and integrated route and predictive management platform for your operational teams



Reduce Operational and Infrastructure Costs

- Reduction of the number of vehicles
- Reduction of the number of waste bins
- Reduction of fuel costs
- Reduction of service cost

Reduce Environmental Impact

- Reduction in CO2 emissions
- Reduction of overflowing waste bins
- Reduction of noise level
- Reduction of fuel

Provide Deep Insights and Analytics

- Fleet analytics (route optimization)
- ESG and Sustainability analytics
- Material generation and volume analytics
- Resource allocation analytics

Typical Applications





TAOGLAS®

DATASHEET

Taoglas Waste Insights™ for Smart Waste Management

Technical specifications

| | |
|--------------------------------|---|
| Distance measurement | Ultra |
| Minimum distance | 15 cm |
| Maximum distance | 255 cm/high reflective commodities 170 cm/other commodities |
| Measurement calculation | Multi measurement with weight approximation |
| Temperature measurement | Yes |
| Weight (batteries included) | 215 g |
| Weight (battery excluded) | 165 g |
| Size (h/w/d) | 50 mm/120 mm/54 mm |
| Power supply | Up to 4 years (battery duration depends on local temperature, type and position of the bin, and frequency of measurement) |
| Batteries voltage and capacity | 3.6V, 2600 mAh |
| Batteries type | Lithium-thionyl chloride (Li-SOCL2) |
| Battery replaceable | Yes, 2 batteries type LS14500 (2 x 20 grams) |
| Temperature range | -40°C to + 65°C |
| Device class | Class A |
| Adaptive Data Rate | Yes |
| Downlink configuration | Yes |
| Measurement times | Up to 24 times per day |
| Turn on mechanism | Magnetic |
| Cover | Recyclable, polyamide with optical fibers |
| Device type | Sensor Plug'n'Play |
| Connectivity | NB-IoT / CAT-1 LoRaWAN or SigFox |
| Usage | Indoor, load carriers and containers, outdoor |
| Application | Distance measurement, filling level measurement |
| Sensors | Distance |
| Enclosure rating | IP66 |
| Certifications | CE, RCM, PTCRG |

Ultrasonic Sensor

1 inch Ultrasonic sensor reads the topology of the waste in the bin.

Cone Seal

The cone seal provides an option for a cone to be retrofitted for larger bin vessels.

Hardened Plastic Enclosure

Hardened plastic enclosure allows for robust installation in harsh environments including sea salt spray locations, duty and dirty locations and all weather locations.



On/Off

By holding the magnet at this location the device will beep 5 times and turn itself on or off.

Optical Sensor

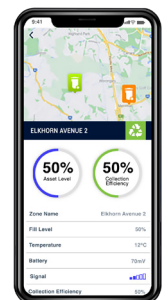
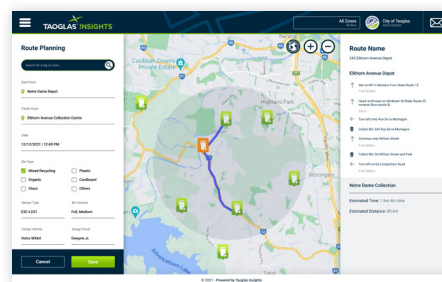
Two optical sensors for accurate optical measurements.

IP66 Rated

Enables high pressure washer cleaning.

Product Features

- Multi-technology sensing (Ultrasonic & Optical)
- 5m sensing distance for all bin types
- Monitors solid or liquid waste
- Emergency Alerting System (fire/tip/relocation)
- Real-time sensing of fullness
- NB-IoT / CAT-1 LoRaWAN or SigFox capable communication
- IP66 rated for harsh waste environments
- Built-in user replaceable dual Lithium-thionyl chloride (Li-SOCL2) batteries



For further details visit: www.taoglas.com/smart-waste

Smartphone application for easy use.

taoglas.com